

LDPR5-10

直动式减压 / 溢流阀

说明 DESCRIPTION

A cartridge-style direct-acting spool-type pressure reducing/relieving valve

滑阀直动式减压 / 溢流阀

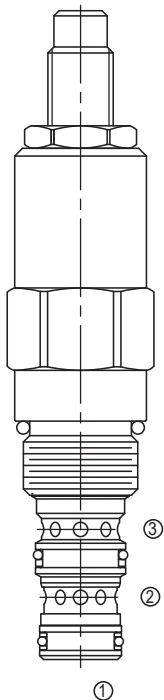
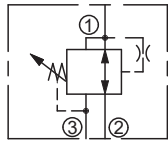
工作 OPERATION

In its steady state, the valve allows flow to pass bi-directionally from ② to ①, with the spring chamber constantly drained at ③. On attainment of a pre-determined pressure at ①, the cartridge shifts to restrict input flow at ②, thereby regulating pressure at ①. In this mode, the valve will also relieve ① to ③ at approximately 10 bar over the reducing setting.

在①口的压力达到弹簧设定的压力时，从②到①减压。弹簧腔内排到③口。

当①口的压力超过预设定的压力 10bar 以上时，②口渐渐关闭，①到③开始溢流。

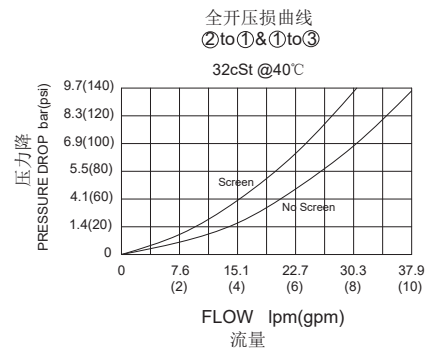
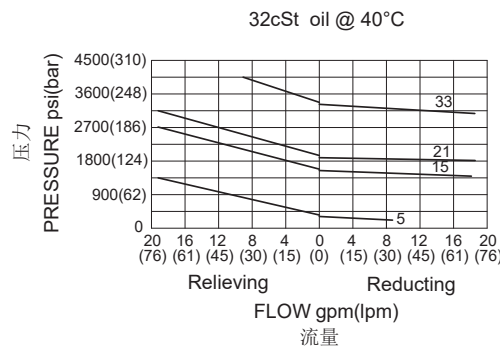
SYMBOL



技术参数 SPECIFICATIONS

工作压力(Operating Pressure):	Ports ①&②: 345bar Port ③: 69bar
流量(Flow):	See PRESSURE DROP VS. FLOW graph.
内泄漏(Internal Leakage):	from②to③(内泄漏②到③)82cc/min.max.
弹簧调压范围(Standard Spring Range):	10.3-37.9 bar, preset预设定: 19bar 6.9-103.4 bar, preset预设定: 57bar 27.6-144.8 bar, preset预设定: 72bar 55.2-227.5 bar, preset预设定: 114bar
温度(Temperature):	-40°F to +250°F(-40°C to +120°C)
过滤(Filtration):	See Page (参见) N-1
油液(Fluids):	Mineral-based fluids with viscosities of 7.4 to 420 cSt.(矿物油粘度)
插孔(Cavity):	10-3, See page M-2
阀块材料(Body Material):	Steel & Ductile iron rated to 350bar 钢和球铁允许使用最大压力350bar

压力 - 流量曲线 PRESSURE DROP VS.FLOW



订货代号 TO ORDER

LDPR5 - 10 - * * - * / ** - * ***

┌───┐
┌──┐
┌──┐
┌──┐
┌──┐
┌──┐

1
2
3
4
5
6

1 功能
LDPR5= 直动式溢流阀
Direct-acting Spool-type
Pressure Reducing/Relieving Valve

2 规格 Size
10=10 规格

3 弹簧调压范围 Spring Ranges
5=150-550psi(10.3-37.9bar)
Preset:275psi(19bar)
15=100-1500psi(6.9-103.4bar)
Preset:750psi(57bar)
21=400-2100psi(27.6-144.8bar)
Preset:1050psi(72bar)
33=800-3300psi(55.2-227.5bar)
Preset:1650psi(114bar)

4 调节 Adjustment
K= 调节手轮 1-1/2'Dia Knob
内六角调节杆 (Omit for 1/4 Hex Allen head)

5 设定压力 Setting In Bar
空白 Blank= 预设定 Preset
例 Example:0100=100Bar

6 阀块油口 Body Porting
空白 Blank= 不带阀块 None
6T=SAE6
8T=SAE8
2G=G 1/4
3G=G 3/8

※ 阀块详见章节 K-5
其它螺纹油口也是可选择的
Other Porting is Available

E

安装尺寸 INSTALLATION DIMENSIONS

Unit=Millimeters

